



Market Hall Vets

Newsletter Companion Animal

February 2012

Practice Facilities

- * Appointment System
- * 24hr Emergency Care
- * In-house Lab
- * Weight Checks
- * Health Checks
- * Vaccination
- * Dental Facilities
- * Canine Behaviourist
- * Car Park

Consulting Times.

Monday-Friday

9.00-12.00

2.00-3.30

4.30-6.00

Saturday

9.00-12.00

Please give 24 hours notice for repeat prescriptions

Please remember there is always a 24 Hour Emergency Service

www.markethallvets.co.uk

01994 230451

Lumps and Bumps

One of the most important things to remember in the world of medicine is that the earlier a problem is detected the better the chances of solving it. The regular health checks your pet receives (often during an annual booster vaccine is key



in detecting any problems). Regular grooming also helps to keep an eye on any lumps and bumps that may have developed.

If your pet develops a lump there may be several reasons for it. These include allergic reactions such as ones caused by bee sting) abscesses, hernias and tumours. The most serious out of these are tumours; these may either be benign— which don't spread and grow slowly or malignant—which grow fast and can easily spread to other parts of the body

If you do find a lump on your pet it is important that you bring your pet in for an examination so that we can establish what it may be and start necessary treatment as soon as possible. If you are concerned about a lump on your pet, whether large or small please phone to book an appointment.

Don't forget about the fleas!

With the warm weather a distant memory, it can be tempting to take a pause in the battle to keep your pets and your home free from fleas.

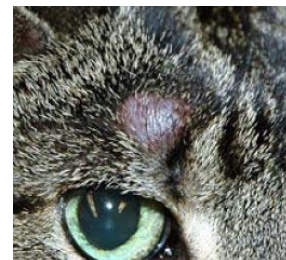
However, you may think there are no fleas present in your house, but actually there may be hundreds of little eggs and pupae lying dormant ,waiting to hatch as soon as the conditions are right.

The eggs and pupae can lay dormant for a long time , up to a year in-fact and unfortunately the pupae cannot be killed with chemicals. For this reason, it may be useful to stimulate the pupae to hatch .

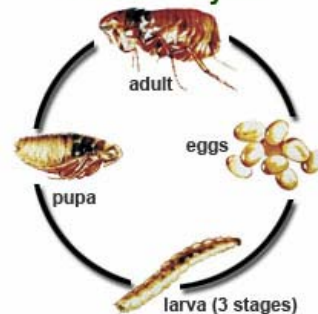
This can be done by putting damp towels on radiators and vigorously Hoovering the carpets. Both the vibrations from the hoover and the change in humidity from the towels should encourage them to hatch. It is then advised to treat your pets with a de-flea product and to use a household spray around the house, remembering that the first thing the flea will do after it has hatched from its pupae , is to find its first tasty meal! For more help or advice please contact the surgery.

THIS MONTHS OFFER

10% off Fat Dog Slim Barking Heads Dog food



Flea Life Cycle



For further information on any of these topics please contact the practice on 01994 230451

Guinea Pigs..did you know?

- ◆ Guinea pigs make wonderful pets that are fun to look after and can form a close bond with their owners.
- ◆ Originating from the mountains and grasslands of South America, they were first domesticated as far back as 4000BC .
- ◆ Guinea pigs have a particularly long gestation period 59-72 days (a rabbits gestation period is 28-32 days, rats and mice are roughly 19-22 days). Baby guinea pigs are called pups.



- ◆ Guinea pigs can live for 7-9 years
- ◆ When happy, Guinea pigs may jump straight up and down, this is known as 'pop corning'.
- ◆ Guinea pigs are unable to produce vitamin C within their bodies, so this must be supplemented in their food
- ◆ Guinea pigs teeth grow constantly so they must be given an appropriate chew toy to keep their teeth properly worn down.
- ◆ Guinea pigs are not nocturnal, they prefer to take mini naps during the day time.

Feline Leukemia Virus

Is your cat vaccinated? Did you know that Feline Leukaemia Virus is one of the most common cause of premature death in cats? The virus is found in the saliva and can be spread from one cat to another usually from biting or licking another cat.

Leukaemia can cause a suppression of the immune system meaning the cat will be exposed to infections that a normal healthy cat

may easily recover from. Other symptoms that a cat may have Feline Leukaemia Virus are :

Weight loss, loss of appetite, poor coat condition, inflammation of the gums, a variety of eye conditions and persistent diarrhoea . The disease is however unrelated to any human condition and quite specific to cats.

Cats at the greatest risk of catching Feline Leukaemia Virus are often cats living outdoors unsupervised, kittens born to infected mothers and cats living with other cats who's vaccination status is unknown.

Luckily vaccination of the cat is very effective for the prevention of Feline Leukaemia, usually given within a combination of a vaccine that will cover many different illnesses.

